

The screenshot displays a Linux desktop with a desktop environment featuring a blue mountain background. A Netscape browser window is open, displaying a web application titled "monitor\_v4". The application interface is green and contains several control elements and data visualizations:

- File Information:**
  - Nom du fichier de monitoring: C:\Documents and Settings\brutus\Mes documents\LabVIEW Data\Monitoring\Param\_20050314\_153354.txt
  - Nom du fichier log: C:\Documents and Settings\brutus\Mes documents\LabVIEW Data\Monitoring log\_20050314\_153354.txt
- Control Panels:**
  - Time between points (s): 10,0
  - Measures per point: 21
  - Number of points: 65535
  - Saving File: ON
  - Current speed (K/min): 0,09
- Pression Plot:** A line graph showing pressure (P in mbar) over time (0 to 1125). The y-axis ranges from 1,00E-6 to 1,00E-5.
- Temperatures Plot:** A line graph showing temperature (K) over time (0 to 1125). The y-axis ranges from 249,55 to 250,10. The plot shows a noisy signal fluctuating between approximately 249,6 and 249,9 K.
- Temperature Data Summary:**
  - Pt plan focal: 286,96
  - Pt serpentn: 231,31
  - Pt doigt froid: 249,61
  - Temperature (K) 1: 0,45895
  - Temperature (K) 2: 0,22157
  - Temperature alarm (K/min): 1,0

The desktop taskbar at the bottom shows the "démarrer" button and several open windows, including "lppp204.in2p3.fr - Terminal disabled" and "monitor\_v4 - Netscape".

Time between points (s)

10,0

Measures per point

21

Number of points

65535

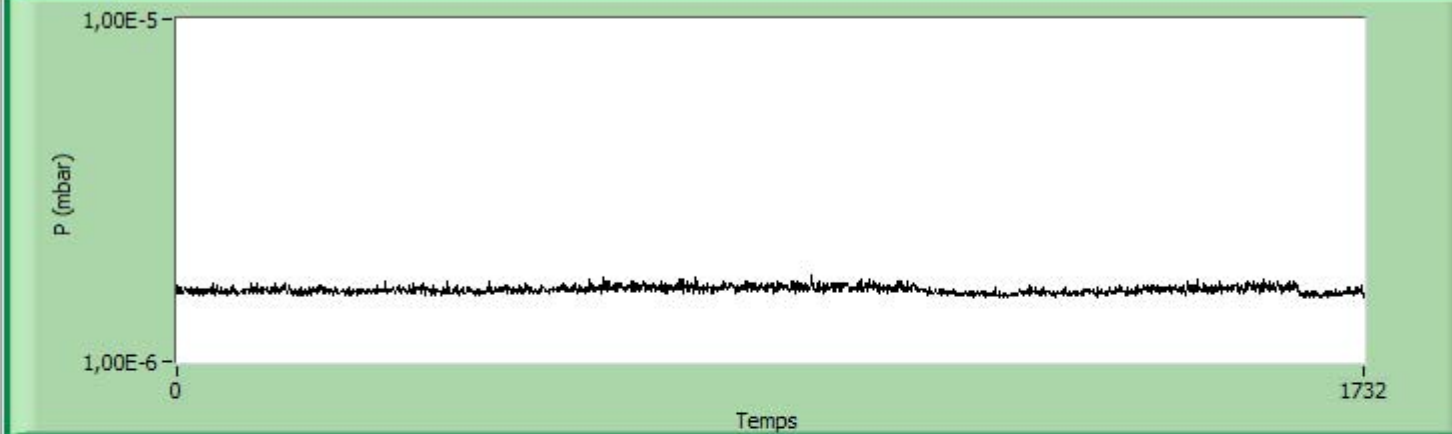
Saving File

ON

Current speed (K/min)

0,04

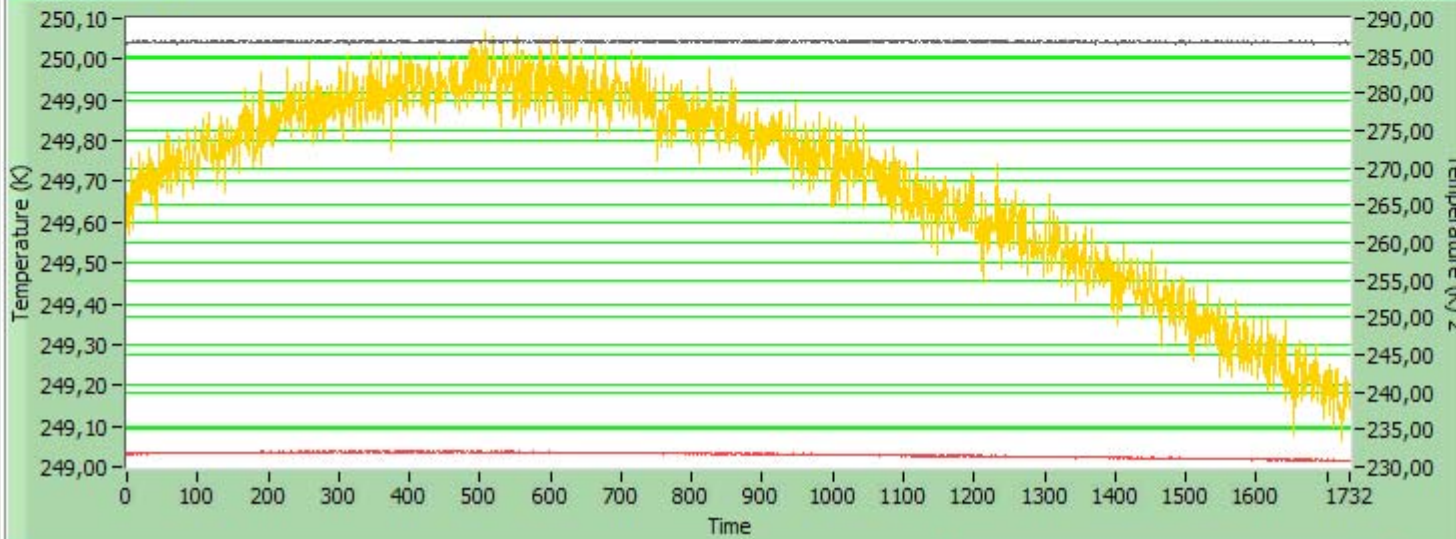
Pression



Penning

1,548E-6

Temperatures



Pt plan focal

Pt serpentin

Pt doigt froid

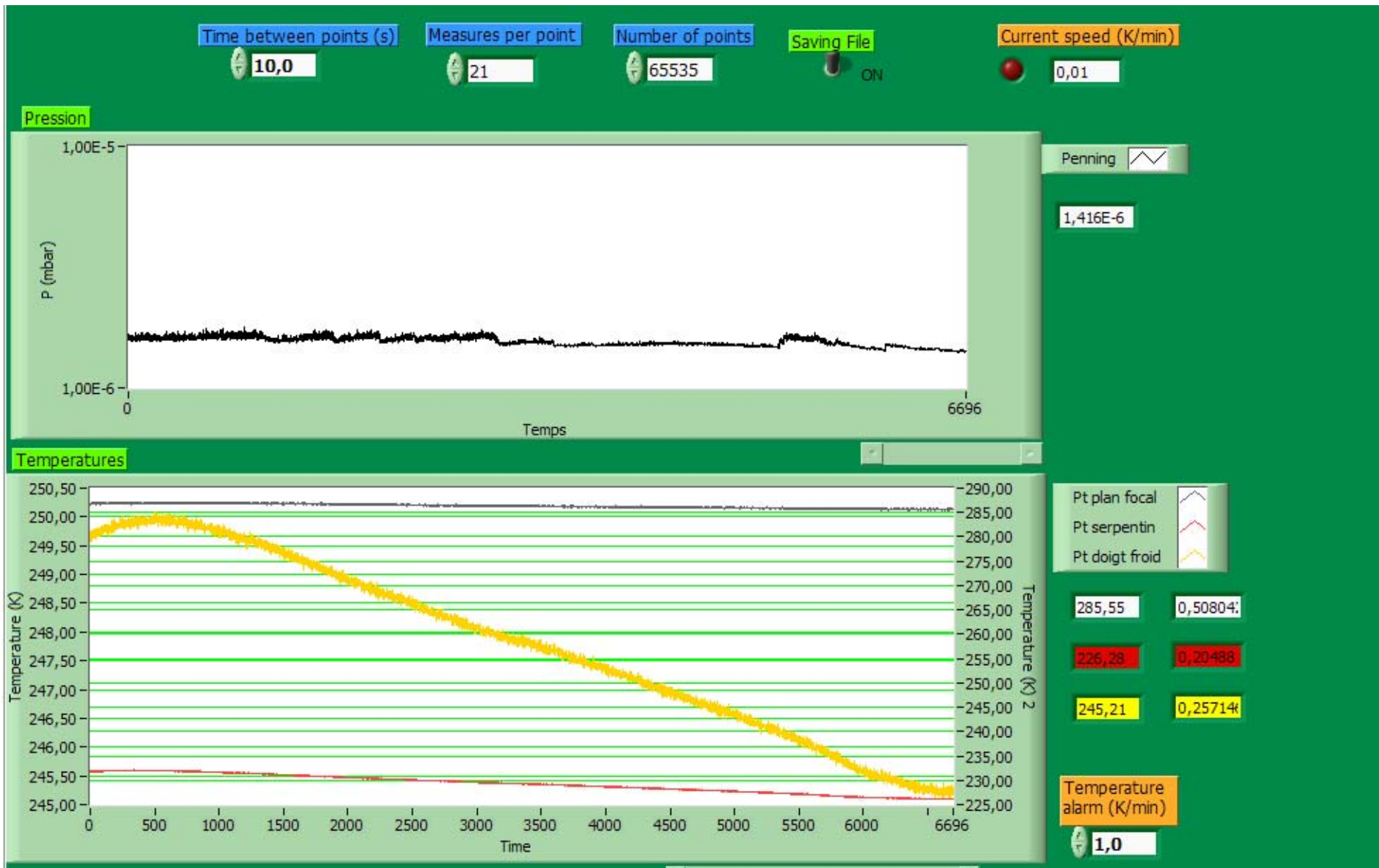
286,87      0,40054

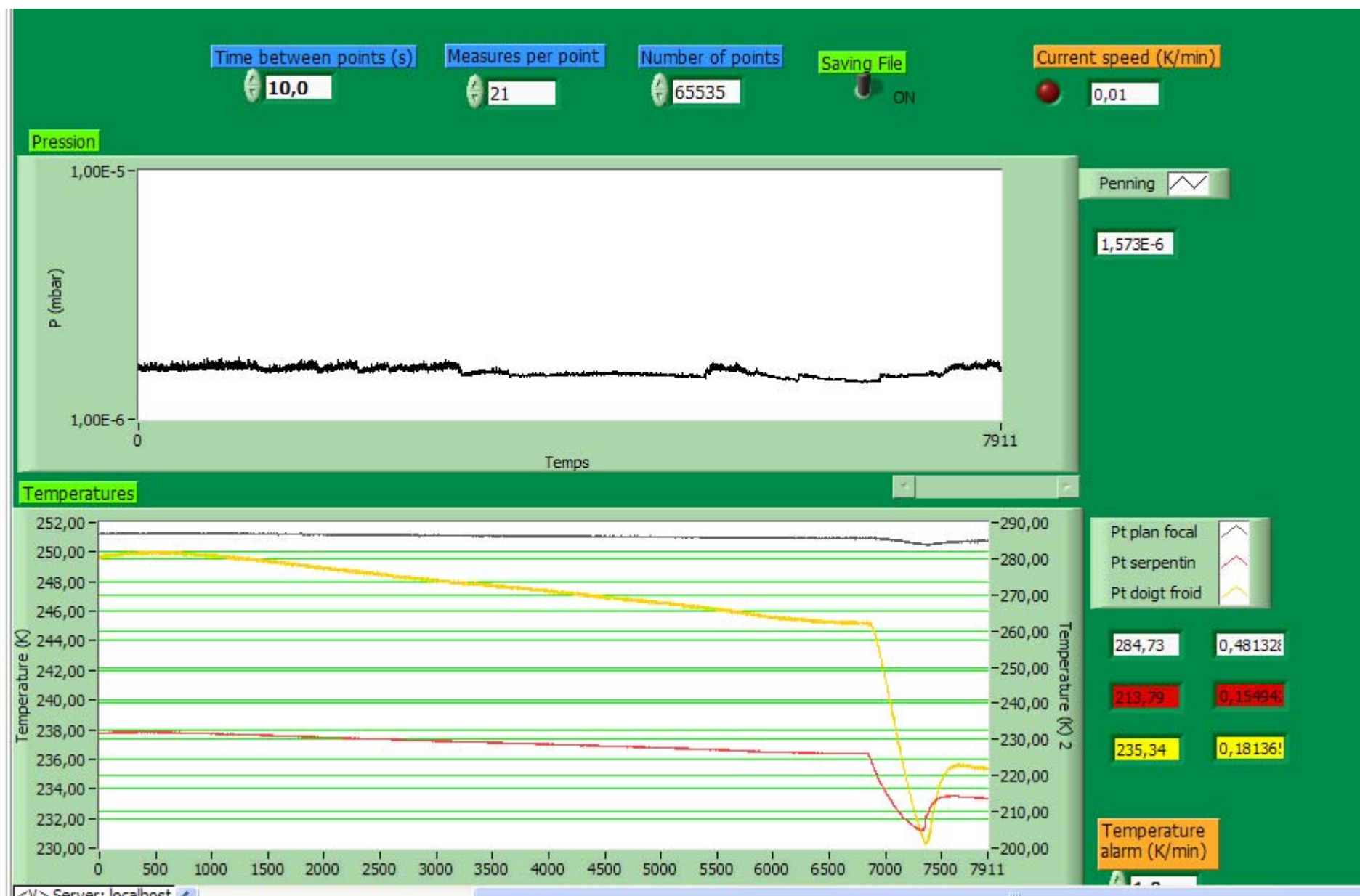
230,82      0,20471

249,15      0,23843

Temperature alarm (K/min)

1,0





Time between points (s)

10,0

Measures per point

21

Number of points

65535

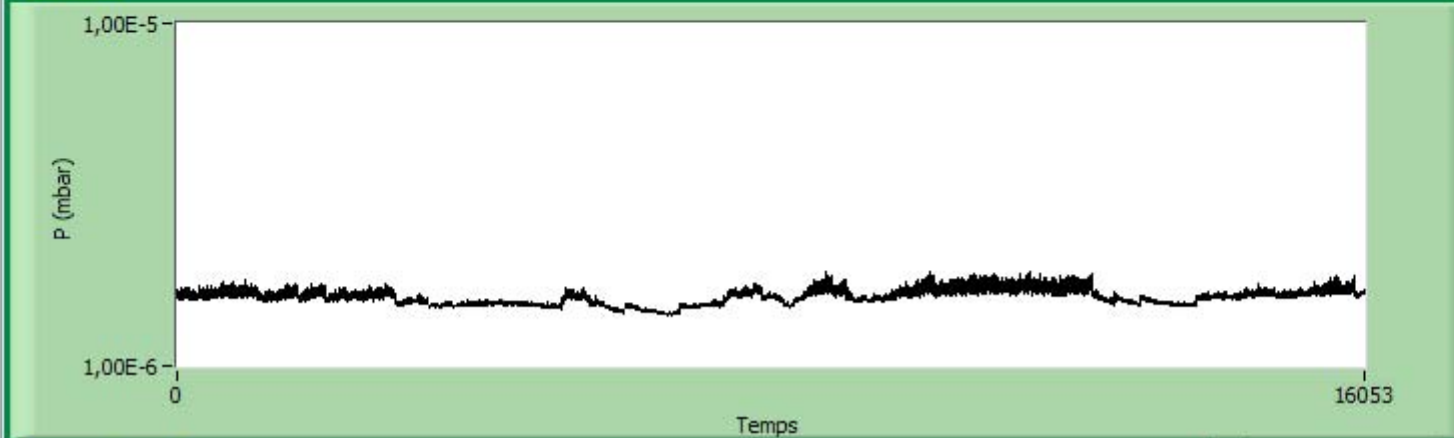
Saving File

ON

Current speed (K/min)

0,02

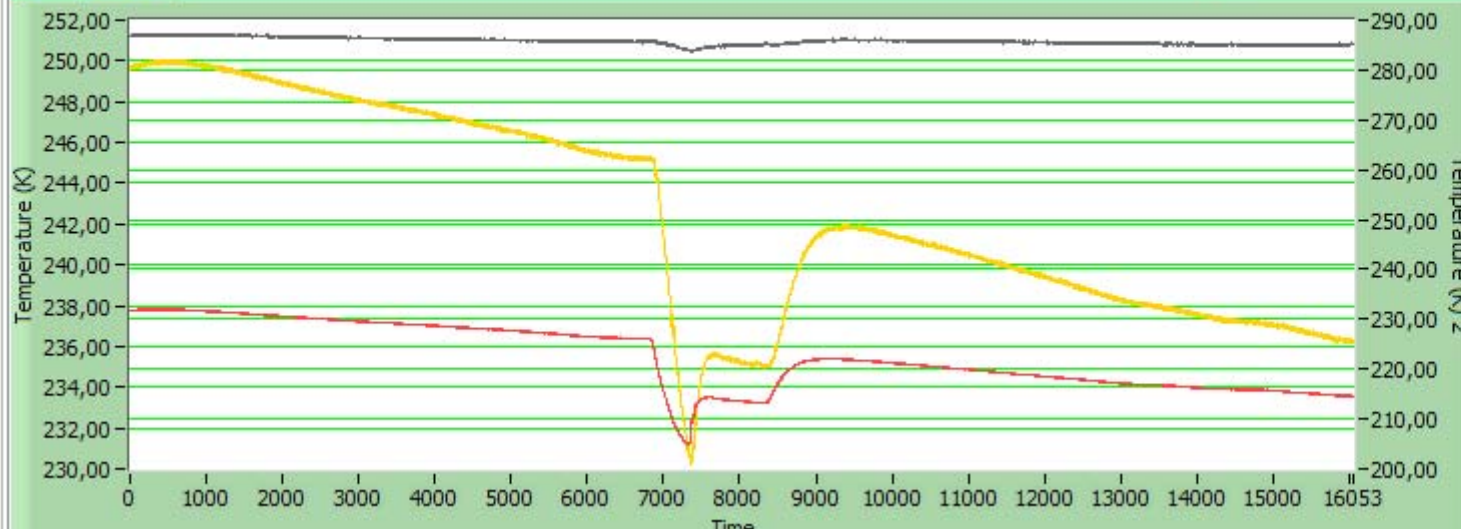
Pression



Penning

1,631E-6

Temperatures



- Pt plan focal
- Pt serpentin
- Pt doigt froid

285,03

0,58231!

214,57

0,19564

236,22

0,18686

Temperature alarm (K/min)

10