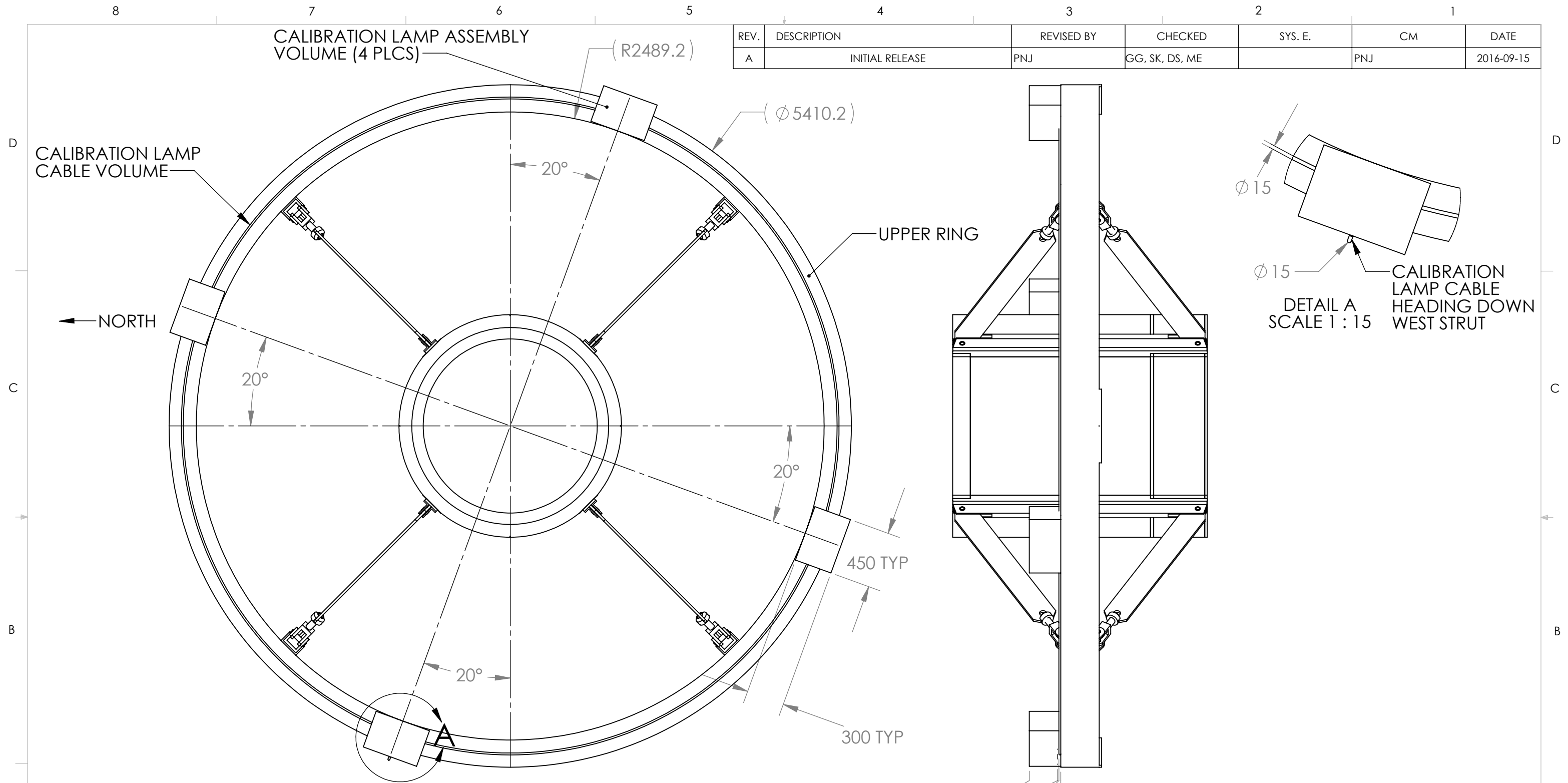


REV.	DESCRIPTION	REVISED BY	CHECKED	SYS. E.	CM	DATE
A	INITIAL RELEASE	PNJ	GG, SK, DS, ME		PNJ	2016-09-15



VIEW LOOKING FROM THE SKY TOWARD THE TELESCOPE ALONG THE -Z1 AXIS

NOTES: UNLESS OTHERWISE SPECIFIED

1. PROVISIONS NEED TO BE PROVIDED TO ATTACH CALIBRATION LAMP CABLE TO UPPER RING.
2. ONE QUADRANT OF CALIBRATION LAMP CABLE WILL BE ABSENT
3. MASS PER CALIBRATION LAMP ASSEMBLY BOX < 12 KG (TBR)
4. MASS OF CALIBRATION LAMP CABLE SUPPORTED BY UPER RING < 5 KG (TBR)
5. THEREFORE THE TOTAL MASS OF CALIBRATION ASSEMBLY SUPPORTED BY UPPER RING < 53 KG

UNLESS OTHERWISE SPECIFIED:

DIMENSIONS IN MM
TOLERANCES:
ANGULAR ± 0.5°
X ± 0.5
X.X ± 0.1
X.XX ± 0.05
X.XXX ± 0.010

GD&T PER: ASME Y14.5M-2009

MATERIAL

MACHINING FINISH:

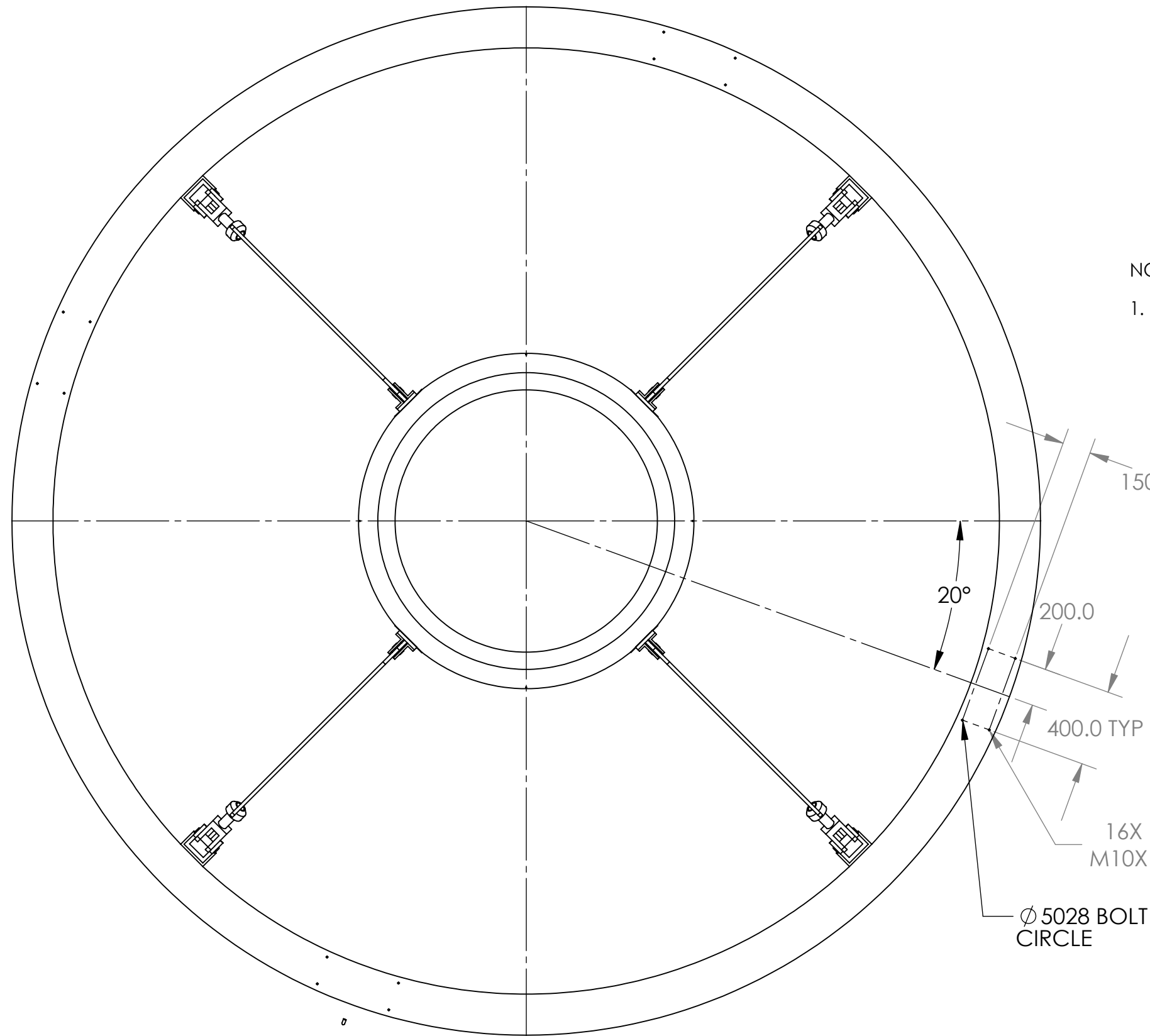
EDGE BREAK:

PROJECTION:
THIRD ANGLE

DO NOT SCALE DRAWING

Ernest Orlando Lawrence Berkeley National Laboratory		
PROJECT DESI		
TITLE: Upper Ring to Calibration System Interface Definition		
SOLIDWORKS MODEL REVISION AT TIME OF RELEASE: 0014 SOLIDWORKS DRAWING REVISION AT TIME OF RELEASE: 0004		
SIZE	DWG. NO.	REV
B	DESI-1660	A
SCALE: 1:30 WT: 2571.61 Kg		SHEET 1 OF 2

CALIBRATION LAMP SYSTEM SUPPRESSED



NOTES: UNLESS OTHERWISE SPECIFIED

- M10X1.5 BOLTS USED TO ATTACH CALIBRATION LAMPS TO THE UPPER RING

150.0 TYP

20°

200.0

400.0 TYP

16X Ø 8.5 ± 0.0245
M10X1.5 - 6H ± 0.020

Ø 5028 BOLT
CIRCLE

UNLESS OTHERWISE SPECIFIED:	
DIMENSIONS IN MM	
TOLERANCES:	
ANGULAR ± 0.5°	
X	± 0.5
X.X	± 0.1
X.XX	± 0.05
X.XXX	± 0.010
GD&T PER: ASME Y14.5M-2009	
MATERIAL	
MACHINING FINISH:	
EDGE BREAK:	
PROJECTION:	
THIRD ANGLE	
DO NOT SCALE DRAWING	

Ernest Orlando Lawrence
Berkeley National Laboratory
PROJECT DESI

TITLE:
Upper Ring to Calibration
System Interface Definition

SOLIDWORKS MODEL REVISION AT TIME OF RELEASE: 0014
SOLIDWORKS DRAWING REVISION AT TIME OF RELEASE: 0004

SIZE	DWG. NO.	REV
B	DESI-1660	A

SCALE: 1:25 WT: 2571.61 Kg SHEET 2 OF 2