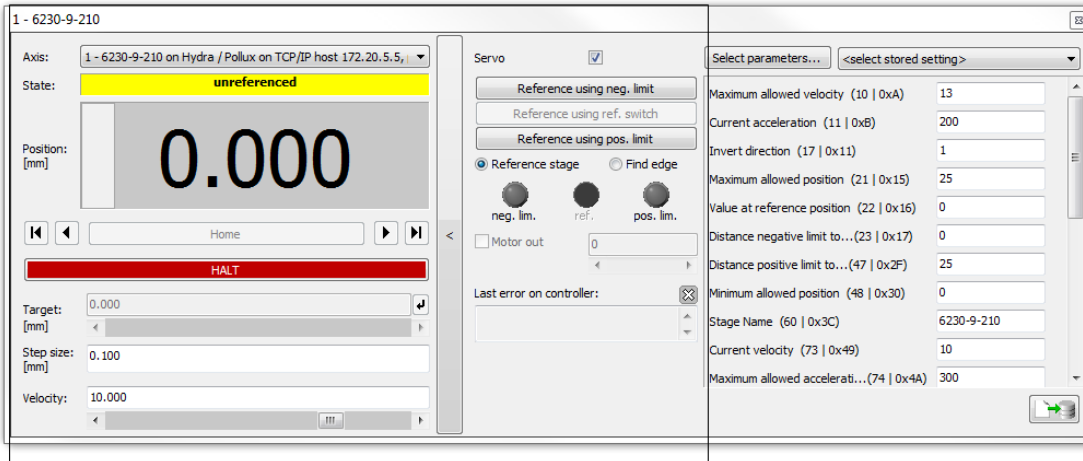


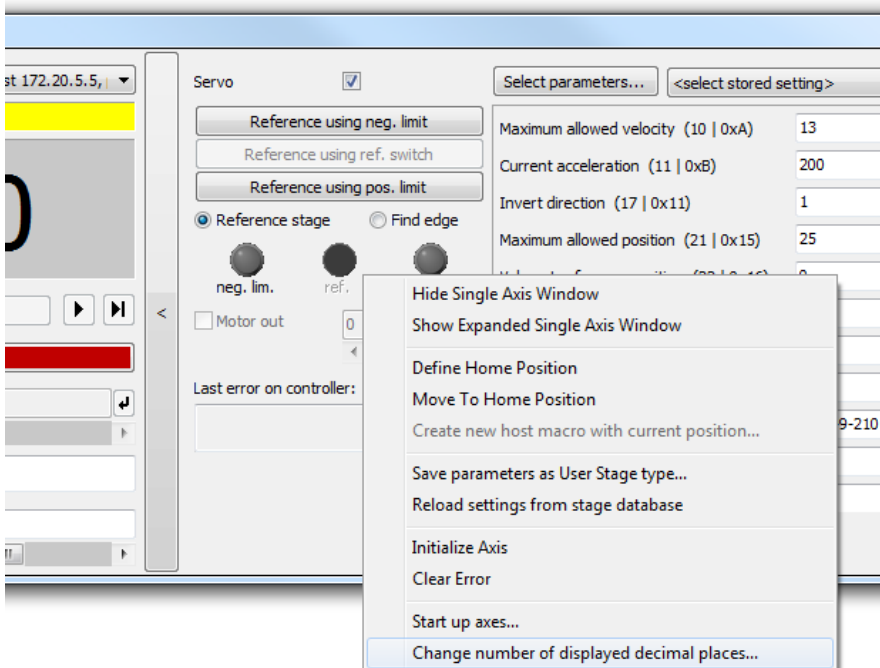
## Displayed Decimal Places

As default Mikromove shows only 3 decimals, but this can be changed via Mouse-Click right, if you are in the area shown below.



Here you can find the context menu, 'change number of displays decimal places.

The SMC-hydra itself gives 6 decimals as default (1 nm)



Projekt:	Produkt:	H:\AppNote Mikromove_Hydra_Pollux.doc	
XXX	XXX	19.03.15	Seite 1 von 3

## Debug Function

The GCS2 implementation via the *PI\_HydraPollux\_GCS2\_DLL.dll* offers only a reduced intersection of commands. But there is a direct debug command to get access to all Venus-3 SMC-hydra commands (*Hydra\_Venus\_Handbook\_5\_0000.pdf*)

Send a query-command:

dbg? venus command

dbg? p	returns the actual vector position
dbg? 1 np	returns the actual axis position
dbg? 1 gi	returns the actual effective motor-current
dbg? getserialno	returns the serial number of the controller

Send a command without answer

dbg venus command

dbg 12.2 13.3 m	absolute vector move
dbg 12.56 sv	define vector velocity
dbg 250 sa	define vector acceleration

